

# Corporate Information



We are the top company of the sheet cosmetics OEM makers in Japan.



**3D FACE MASK**  
— Three dimensions —

Pursuit of the Confidence & Responsibility  
more Adhesion feeling  
covers as much as possible  
Easier handling

Easy-to-use, It molds to your face.



Since **NICHIEI** was founded in 1970, we targeted "Dedicating society with sincere and contributing to achieve Wealthy Life".

We are foreseeing constantly wealthy life with inventive idea and keep creating original products to achieve customer's satisfaction.

Since the advent of Multi-Media era in 21st century,measure global industries change the industrial structure and global production activity in addition to global environment,our corporation is making great effort to develop new field with the collection of intelligence to give the satisfaction to our customer.

## The Confidence & Responsibility of the FACE MASK

### Special Facial Care

We give the 'The best comfort & effect'.



### CLEAN & SANITARY

Automatically manufacturing all process

The pouch packaging is done through an automated process, in a clean and sanitary environment, with no human contact.



### Original mask shape

The design of our mask was made from years of experience. Please choose out of the mask types.

3D Three kinds of types

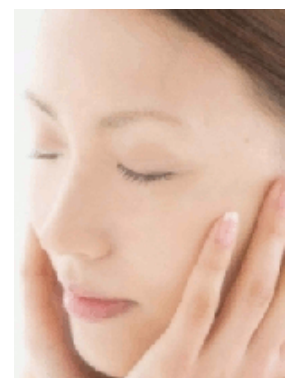
2D Five kinds of types

### The best combination of a material

The best combination of a material

You can choose the sheet that goes with the essence.

As requested, We develop and formulate the essence.



We are the top company of the sheet cosmetics OEM makers in Japan.

## 3D FACE MASK– Pursuit of the Confidence & Responsibility

Design Registration (Japan) / Patent-pending



Type-R  
REGULAR

Face and Chin care

Type-ST  
STRETCH

With stretch wings

Type-SP  
SPECIAL

Face and Neck

more

Adhesion feeling

covers as much as possible

Easier handling

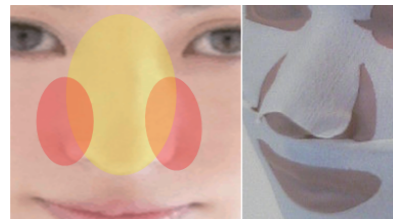
<< There are 3 types  
of the mask for different purposes.



Fit your face.

The chin is wrapped in a 3D mask. It cares for smile lines, pores and face line well.

Well-cared for the skin around the nose



Around the nose when you wear 2D mask



Focus on your chin line and mask line first.

Put on your face

We are the top company of the sheet cosmetics OEM makers in Japan.

## Product range

### Cosmetics



Working women are increasing while life style is changing according to activities, working hours, seasonal variation and environment.

Women's demand for cosmetics are changing rapidly individually and as well as their life style in the new circumstances.

In the office or out doors activity, portable-convenient products are essential. To cope with this circumstances, Our corporation is concentrating this area "portable convenient products"

### Cosmetic tools and cosmetic derivatives



Beauty and Health is a theme of human beings all time.

We, as manufacturer and handling cosmetic tools, always appreciate the value of customer's demand for beauty and health and replace as our wish.

We are making best effort to develop new products and aiming that our qualified products will be appreciated by all the people in the world as "the products, safe in use".

This is the reason why we select and concentrate to use natural materials such as, natural cotton, wooden pulp and non-woven fabrics from organic natural materials.

Our sincere hope is that we utilize more natural materials for our product range,

### Hygienic Products ( medical and Dental)



Development of medical care products are rapidly changing and advancing based on the glowing recognition of an infection contacted in the hospital, much more than our expectation.

We, as the pioneer of hygienic products, construct the system to cope with demand flexibly and quickly to any requirement from the doctors and nurses who dedicating medical care in the hospitals.

We are the top company of the sheet cosmetics OEM makers in Japan.

## CORPORATE PROFILE



Name: NICHIEI Co., Ltd

Headquarters Address:  
5-11-2, Harayamadai, Sakai City, Osaka, Japan,  
590-0132

Founded: April 1970  
Capital: JPN 30,000,000yen  
Board Chairman: Susumu Omoto  
President: Takahiro Fujiwara  
number of employees: 200

Group/Affiliated Company:  
Cosmeplanning Co., Ltd

Senboku Plant:  
5-11-2, Harayamadai, Sakai-City, Osaka, Japan

Hatsushiba Plant:  
5-10-22, Hikisho-nishi, Higashi-ku,  
Sakai, Osaka, Japan

Rlinku Plant:  
3-21, Rinku-minamihama,  
Sennan-city, Osaka, Japan

Laboratory:  
2nd fl. KITAHARA-FUDOUSAN Building,  
7-241, tobe-chou, Nishiku,  
Yokohama, Kanagawa, Japan

### Main Customers:

Kanebo COSMETICS INC.  
Kracie Home Products, Ltd.  
MORITA HOLDINGS CORPORATION  
KAWAMOTO CORPORATION  
POLA INC.  
NOEVIR Co., Ltd.  
Naris Cosmetics Co., Ltd  
OPPEN COSMETICS Co., Ltd.  
YAKULT HONSHA CO., LTD.  
L'occitane (FAR EAST) LTD.  
ALBION Co., Ltd.  
DHC Corporation  
Dr.Ci:Labo Co., Ltd.  
FUJIFILM Corporation  
ROHTO Pharmaceutical Co., Ltd.  
Kobayashi Pharmaceutical Co., Ltd.  
Ajinomoto Co., Inc.

Kobayashi Pharmaceutical Co., Ltd.  
Ajinomoto Co., Inc.  
Ryohin Keikaku Co., Ltd.  
Nihon Kolmar Co., Ltd.  
PICASO COSMETIC LABORATORY LIMITED  
TAIKI Corporation, Ltd.  
Keytrading Co., Ltd.  
OZU CORPORATION  
KAKUI Co., LTD.  
UNITIKA LTD.  
ASAHIKASEI FIBERS CORPORATION  
KURARAY CO., LTD.  
Futamura Chemical Co., Ltd.

